



Deutsche Gesellschaft
für Luft- und Raumfahrt
Lilienthal-Oberth e.V.



ROYAL AERONAUTICAL SOCIETY
HAMBURG BRANCH e.V.

VDI

Verein Deutscher Ingenieure
Hamburger Bezirksverein
Arbeitskreis Luft- und Raumfahrt



The Royal Aeronautical Society Hamburg Branch
invites to a Lecture

Praxis-Seminar Luftfahrt

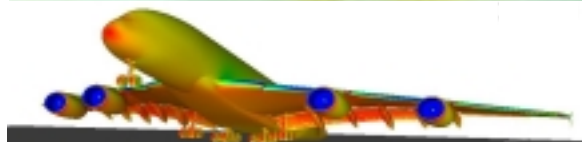
Airbus A380 - Solutions to the Aerodynamic Challenges of Designing the World's Largest Passenger Aircraft

Dipl. Ing. Axel Flaig, Head of Aerodynamics, Airbus

The A380 presented the designers with a variety of challenges which could only be met by the introduction of many innovations in aerodynamics, systems, materials and structures in a multi-disciplinary process.

The lecture will describe how the aerodynamic challenges were met and how the resulting cruise and low-speed configurations evolved. The design process, the methods and tools and the interdisciplinary dependencies will be addressed. In particular the increasing importance of numerical design tools and the resulting changes in wind-tunnel testing philosophy will be addressed.

The lecturer completed his studies in Aeronautics/Aircraft Design at the RWTH Aachen before joining the flight mechanics department at VFW/Fokker in 1980. He then moved to aerodynamics where he became a high-lift specialist. Following a year in Toulouse, in 1996 he took over the aerodynamic data group and in 2001 he became responsible for the trans-national wind-tunnel testing organisation at Airbus. Finally in 2006 he became responsible for integrating the aerodynamics and wind-tunnel testing departments trans-nationally. He is currently Head of Aerodynamics at Airbus.



When: Thursday, 31st January 2008, 19:00 h

Where: Hochschule für Angewandte Wissenschaften (HAW), Berliner Tor 5
(Neubau), Hörsaal 01.12, 20099 Hamburg

Kontakt:

RAeS	Richard Sanderson	Tel.: (04167) 92012	events@raes-hamburg.de
DGLR	Thorsten Schiek	Tel.: (040) 743 78424	hamburg@dglr.de
DGLR/HAW	Prof. Dr.-Ing. Dieter Scholz	Tel.: (040) 70971646	Scholz@fzt.haw-hamburg.de
DGLR/VDI	Jürgen K. A. Schulz	Tel.: (04181) 72 45	Juergen.K.A.Schulz@t-online.de

DGLR Bezirksgruppe Hamburg: Internetseite zur Vortragsreihe:
RAeS Hamburg Branch

<http://hamburg.dglr.de>
<http://www.raes-hamburg.de>

Der Besuch der **Veranstaltung ist steuerlich absetzbar**. Bringen Sie dazu bitte eine ausgefüllte Teilnahmebestätigung zur Unterschrift zum Vortrag mit. Mittels **E-Mail-Verteilerliste** wird über aktuelle Veranstaltungen informiert. **Vortragsunterlagen** vergangener Veranstaltungen, aktuelles **Vortragsprogramm**, Eintrag in E-Mail-Verteilerliste, Vordrucke der Teilnahmebestätigung: Alle Services über die Internetseite zur gemeinsamen Vortragsreihe von DGLR/VDI/RAeS/HAW: <http://hamburg.dglr.de> .